



PLANTBOX CATALOG



TABLE OF CONTENTS

02 / About us

03 / Product Review

05 / Cylinder Plant Box

06 / Cube Plant Box

07 / Conical Plant Box

08 / Customized Plant Box

09 / Color palette



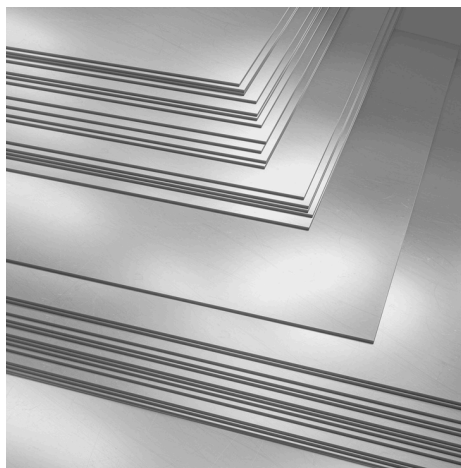
ABOUT US

Established in 2018 as a joint-stock company, Pars Fixed Equipment Company specializes in the manufacturing of high-quality flower and plant boxes, wall panels, urban elements, and outdoor furniture. Utilizing a diverse range of metal sheets, including carbon steel, stainless steel, and galvanized steel, our company aims to provide durable, sustainable, and innovative solutions for residential, commercial, and public spaces.

Our manufacturing is equipped the latest technology and machinery, such as CNC laser cutting and welding machines, CNC press brakes, and CNC four-roll forming machines. To ensure the highest quality standards, we source premium raw materials from trusted and reliable factories.

Our team is dedicated to pushing the boundaries of design by combining art and technology to create truly unique products. Our specialty lies in the seamless integration of living green plants with hard metal elements, resulting in visually appealing and functional pieces for homes, offices, and landscapes. Our commitment to excellence and innovation has enabled us to deliver exceptional products that enhance our clients' environments. We invite you to explore our range of products and discover how our Company can transform your space with our unparalleled designs.

PRODUCT REVIEW



UNBREAKABLE :

crafted from high-quality metal sheets, our planters are incredibly sturdy and resistant to breakage, ensuring they'll last for years.



EASY TO CLEAN :

the smooth surface of galvanized steel makes cleaning a breeze.



EASY TO MOVE :

equipped with wheels, our planters can be effortlessly moved around the area, allowing you to rearrange your space with ease.

INSTRUCTURE

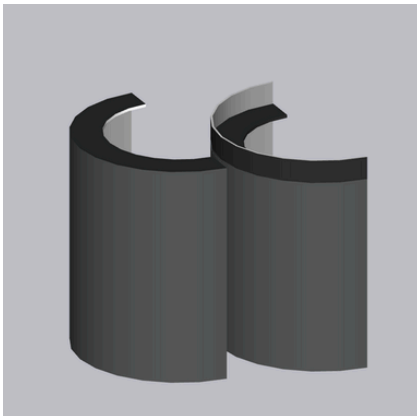


DROP TRAY :

no more leak worries with integrated drop tray that keeps your floors and surface clean and dry.

SUITABLE FOR INDOOR AND OUTDOOR USE:

the galvanized steel construction is weather resistant, making these planters a versatile choice for both indoor and outdoor setting.



TWO EDGE STYLE :

choose from two distinct edge styles to create a unique look.

CYLINDRICAL



ITEM	DIAMETR (CM)	HEIGHT (CM)	WHEEL	DROP TRAY	PRODUCT NO.
1	32	50	YES	YES	1-3250-01-01
2	32	70	YES	YES	1-3270-01-01
3	40	40	YES	YES	1-4040-01-01
4	40	60	YES	YES	1-4060-01-01
5	40	80	YES	YES	1-4080-01-01
6	50	50	YES	YES	1-5050-01-01
7	50	70	YES	YES	1-5070-01-01
8	60	60	YES	YES	1-6060-01-01

- ALL SIZES FROM 20 CM TO 200 CM ARE AVAILABLE
- ALL PLANT BOXES PAINTED WITH ELECTROSTATIC SYSTEM
- ALL PRODUCTS CAN MANUFACTURE WITH OR WITHOUR WHEELS AND DROP TRAY

CUBICAL



ITEM	LENGTH (CM)	WIDTH (CM)	HEIGHT (CM)	WHEEL	DROP TRAY	PRODUCT NO.
1	30	30	30	NO	YES	2-303030-02-01
2	30	30	60	NO	YES	2-303060-02-01
3	40	40	40	NO	YES	2-404040-02-01
4	40	40	80	NO	YES	2-404080-02-01
5	50	50	50	NO	YES	2-505050-02-01
6	60	60	60	NO	YES	2-606060-02-01

- ALL SIZES FROM 10 CM TO 250 CM ARE AVAILABLE
- ALL PLANT BOXES PAINTED WITH ELECTROSTATIC SYSTEM
- ALL PRODUCTS CAN MANUFACTURE WITH OR WITHOUT WHEELS AND DROP TRAY

RECTANGLE



ITEM	LENGTH (CM)	WIDTH (CM)	HEIGHT (CM)	WHEEL	DROP TRAY	PRODUCT NO.
1	30	60	30	NO	YES	3-306030-02-01
2	30	80	30	NO	YES	3-308030-02-01
3	40	60	40	YES	YES	3-406040-01-01
4	40	80	40	YES	YES	3-408040-01-01
5	50	100	50	YES	YES	3-5010050-01-01
6	60	120	60	YES	YES	3-6012060-01-01

- ALL SIZES FROM 10 CM TO 250 CM ARE AVAILABLE
- ALL PLANT BOXES PAINTED WITH ELECTROSTATIC SYSTEM
- ALL PRODUCTS CAN MANUFACTURE WITH OR WITHOUT WHEELS AND DROP TRAY

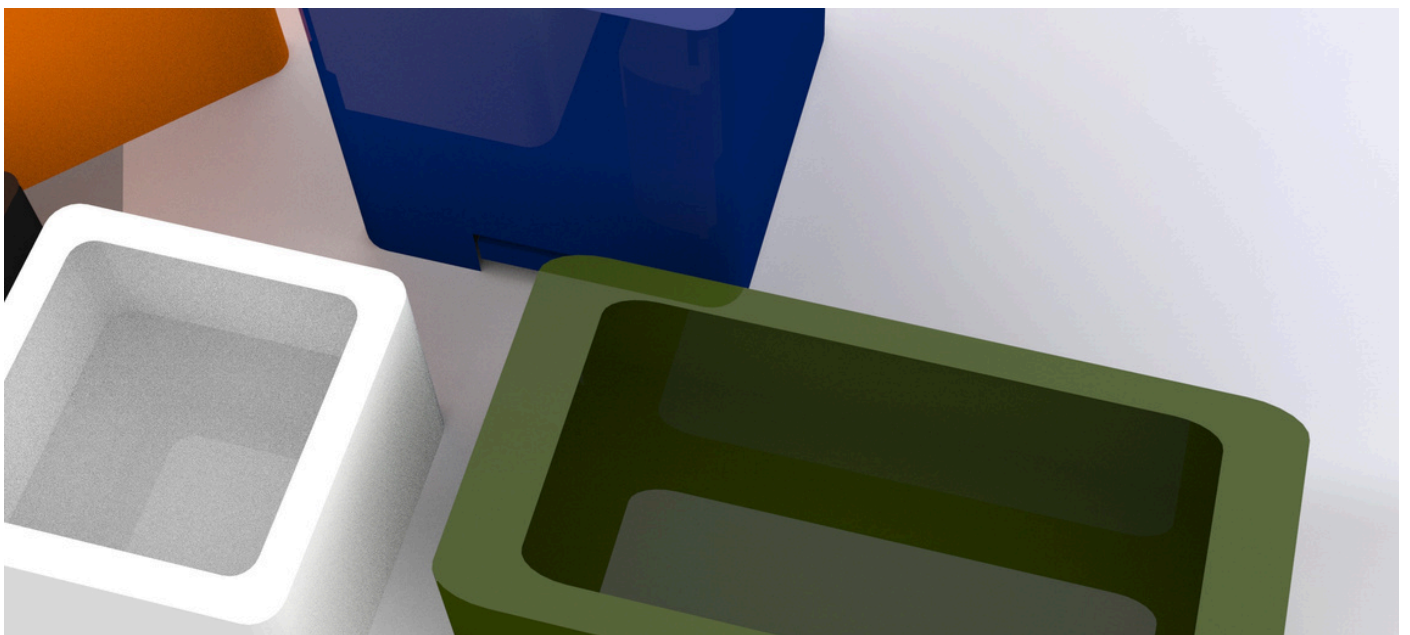
CONICAL



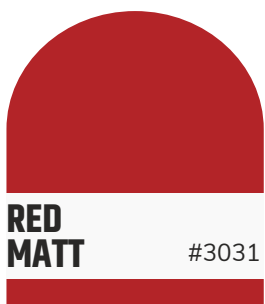
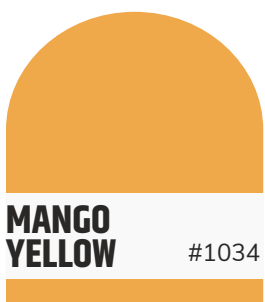
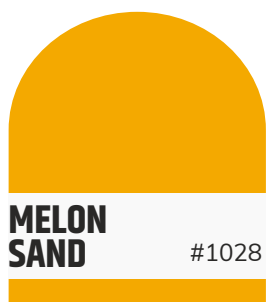
ITEM	DIAMETR (CM)	HEIGHT (CM)	WHEEL	DROP TRAY	PRODUCT NO.
1	32	50	YES	YES	4-3250-01-01
2	40	60	YES	YES	4-4060-01-01
3	40	80	YES	YES	4-4080-01-01
4	40	100	YES	YES	4-40100-01-01
5	50	80	YES	YES	4-5080-01-01

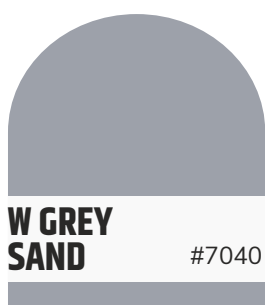
- ALL SIZES FROM 32 CM TO 200 CM ARE AVAILABLE
- ALL PLANT BOXES PAINTED WITH ELECTROSTATIC SYSTEM
- ALL PRODUCTS CAN MANUFACTURE WITH OR WITHOUR WHEELS AND DROP TRAY

CUSTOMIZED



COLOR PALETTE







LET'S CONNECT WITH US



PHONE



+9821 56 23 01 28

EMAIL



info@parsflowerpot.com

ADDRESS



No.5, 4th Golbarg St.
Narenjestan Blv., ShamsAbad
industrial zone, TEHRAN-IRAN

WEBSITE



www.parsflowerpot.com